

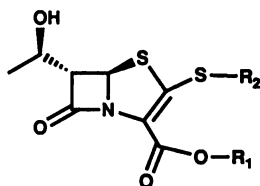
# ERRATUM

## Pharmacokinetics of the Penem CP-65,207 and Its Separate Stereoisomers in Humans

G. FOULDS, A. K. KNIRSCH, J. D. LAZAR, T. G. TENSFELDT, AND N. GERBER

*Drug Metabolism Department and Department of Clinical Research, Central Research Division, Pfizer Inc., Groton, Connecticut 06340, and Department of Pharmacology, College of Medicine, Ohio State University, Columbus, Ohio 43210*

Volume 35, no. 4, p. 666: Fig. 1 should appear as shown below.



<b>Compound</b>	<b>R<sub>1</sub></b>	<b>R<sub>2</sub></b>
CP-65,207-S	—H	
CP-65,207-R	—H	
CP-65,207-POM	$\left\{ \begin{array}{l} \text{—CH}_2\text{OCC}(\text{CH}_3)_3 \\ \text{—CH}_2\text{OCC}(\text{CH}_3)_3 \end{array} \right.$	

\*Stereocenter about which assignment of -S or -R is made