

Nucleotide and Amino Acid Sequences of the Metallo- β -Lactamase, ImiS, from *Aeromonas veronii* bv. *sobria*

T. R. WALSH,^{1*} W. A. NEVILLE,² M. H. HARAN,³ D. TOLSON,² D. J. PAYNE,³ J. H. BATESON,²
A. P. MACGOWAN,⁴ AND P. M. BENNETT¹

Bristol Centre for Antimicrobial Research and Evaluation, Department of Microbiology and Pathology, Medical School, University of Bristol, Bristol BS8 1TD,¹ Southmead Health Services, NHS Trust, Bristol BS10 5NB,⁴ and Analytical Sciences and Med Chem, SmithKline Beecham Pharmaceuticals, New Frontiers, Harlow, Essex,² United Kingdom, and Microbiology Research, SmithKline Beecham Pharmaceuticals, Collegeville, Pennsylvania 19426³

Received 21 April 1997/Returned for modification 27 August 1997/Accepted 25 November 1997

The *Aeromonas veronii* bv. *sobria* metallo- β -lactamase gene, *imiS*, was cloned. The *imiS* open reading frame extends for 762 bp and encodes a protein of 254 amino acids with a secreted modified protein of 227 amino acids and a predicted pI of 8.1. To confirm the predicted sequence, purified ImiS was digested and the resulting peptides were identified, yielding an identical sequence for ImiS, with 98% identity to CphA. Both possessed the putative active-site sequence Asn-Tyr-His-Thr-Asp at positions 88 to 92, which is unique to the *Aeromonas* metallo- β -lactamases.

The functional group 3 β -lactamases (2) have assumed increasing clinical significance due to their ability to hydrolyze carbapenems such as imipenem and meropenem, which, apart from a few exceptions, are poorly hydrolyzed by serine β -lactamases. These enzymes are also resistant to all commercially available serine β -lactamase inhibitors. Plasmid-mediated metallo- β -lactamases have now been identified in key pathogens such as *Klebsiella pneumoniae*, *Serratia marcescens*, *Pseudomonas aeruginosa*, and *Bacteroides fragilis* (1, 10, 25, 26). Furthermore, the metallo- β -lactamase from *S. marcescens*, IMP1, has been mobilized on an integron-like gene, *intI3*, and has spread to *P. putida*, *K. pneumoniae*, and *Alcaligenes* spp. (19). These enzymes have also been identified and characterized from emerging pathogens such as *Aeromonas* spp., *Stenotrophomonas maltophilia*, and *Burkholderia cepacia* and have been the subject of recent reviews (14, 15).

While all metallo- β -lactamases possess the ability to hydrolyze carbapenems, their abilities to hydrolyze other β -lactams, such as penicillins and cephalosporins, vary from enzyme to enzyme. Whereas most metallo- β -lactamases have a broad spectrum of activity, enzymes isolated from *Aeromonas* spp. can readily hydrolyze only carbapenems (17). The sequence of the gene encoding the *Aeromonas hydrophila* enzyme CphA was determined by Massidda et al. (13) and shows significant difference from those of the metallo- β -lactamases of *Bacillus cereus* (9) and *B. fragilis* (20), including conserved amino acids thought to be involved with zinc ion binding (3, 4). Recently, a second *A. hydrophila* metallo- β -lactamase gene, *cphA2*, has been sequenced which, not surprisingly, shows strong homology to *cphA* (15). Hybridization studies using the *cphA* gene probe illustrated that homologs of the *A. hydrophila* gene are found in *A. veronii*, *A. caviae*, *A. jandaei*, and other strains of *A. hydrophila*, illustrating the widespread occurrence of this gene in *Aeromonas* spp. (16).

A metallo- β -lactamase from *A. veronii* bv. *sobria*, ImiS, has been purified and characterized and shown to have a substrate

profile very similar to those of both the CphA and *A. jandaei* AsbM1 β -lactamases (5, 24, 27). In addition, the first 40 N-terminal amino acids of ImiS were found to be identical to those of the CphA enzyme. Interestingly, the *A. jandaei* AsbM1 enzyme also has had its N-terminal sequence determined and shows only 26% similarity to CphA over the first 27 amino acids (27). The purpose of this work was to determine the sequences of both the *A. veronii* bv. *sobria* metallo- β -lactamase gene, *imiS*, and its purified product and to compare these specifically with those of the homologous system in *A. hydrophila*.

A. veronii bv. *sobria* 163a is a clinical isolate obtained from Hammersmith Hospital, London, United Kingdom. *Escherichia coli* DH5 α (7) was used as the host strain for transformation of the *A. veronii* bv. *sobria* gene banks. pSU18 was used as the cloning vector and has been previously described (12). The *A. hydrophila* metallo- β -lactamase gene, *cphA*, carried on plasmid pAS20R, was a gift from G. M. Rossolini and has been previously described (13). All of the media and compounds used have been previously described (23).

Induction of bacterial strains with cefoxitin and imipenem and β -lactamase assays were carried out as previously described (22). Imipenem hydrolysis was assayed at 298 nm. One unit of β -lactamase activity is defined as the amount of enzyme required to hydrolyze 1 nmol of substrate/min/mg of protein in the linear phase of the reaction at 37°C.

For the preparation of DNA probes, large quantities of plasmid pSA20R were prepared and cut with *EcoRI* to release the cloned *A. hydrophila* AE036 insert. The DNA fragments were separated by gel electrophoresis, and the fragment carrying *cphA* (2.0 kb) was recovered, purified by phenol-chloroform extraction, and precipitated as previously described (11). The *E. coli* recombinants to be blotted were spot inoculated onto nutrient agar, and the plate was incubated at 30°C for 4 h. *E. coli*(pAS20R) and *E. coli*(pSU18) were used as positive and negative controls, respectively. The colony blotting and subsequent DNA hybridization were carried out under conditions previously described (11).

DNA sequence determination was performed with the Du Pont Genesis 2000 automated sequencer. Sequences were determined on both strands with a custom primer walking strategy. Compilation of resulting DNA sequences, database

* Corresponding author. Mailing address: Bristol Centre for Antimicrobial Research and Evaluation, Department of Microbiology and Pathology, School of Medical Sciences, University Walk, University of Bristol, Bristol BS8 1TD, United Kingdom. Phone: 0117 9282567. Fax: 0117 9287896. E-mail: T.R.WALSH@BRISTOL.AC.UK.

searches, and sequence alignments were performed with the LASERGENE suite of programs (DNASTAR, West Ealing, London, United Kingdom).

ImiS was purified as previously described (24). The enzyme was digested with either trypsin or endoproteinase Glu-C. In both cases, digestion was carried out for 16 h at 37°C at an ImiS-to-restriction enzyme ratio of 200:1 (6). Analysis of endoproteinase Glu-C peptides was undertaken only when sequence information could not be obtained from the trypsin-peptide mixture. Aliquots of the peptide mixture were separated by reversed-phase high-pressure liquid chromatography (Hewlett-Packard 1090) with an Aquapor RP-300 column (200 by 2.1 mm) eluting at a flow rate of 200 µl ml⁻¹ with a 1%/min linear increase in acetonitrile (eluent system, water-trifluoroacetic acid-acetonitrile). Detection was by UV at 214 nm. A 50-µl volume of digested ImiS was injected per run, and the eluent was split such that individual peptides could be collected for off-line Edman N-terminal amino acid sequencing (ABI477A Pulse liquid sequencer) and also for direct peptide molecular weight determination. Individual peptides were confirmed by a combination of Edman sequencing (8) and mass spectroscopy.

The 2.0-kb insert from pAS20R was used as a probe for hybridization with various digests of *A. veronii* bv. *sobria* 163a chromosomal DNA to identify a restriction enzyme combination suitable for cloning of the *imiS* gene. The most suitable was *EcoRI* and *BamHI*; the *A. hydrophila cphA* 2.0-kb insert hybridized to a 5.5-kb 163a chromosomal fragment. Both pSU18 and chromosomal DNAs were cut with *EcoRI* and *BamHI*. The cut chromosomal DNA was fractionated on a 0.7% agarose gel, and DNA fragments of 3.5 to 7.5 kb were excised and purified. The selected fraction was ligated into pSU18 and subsequently used to transform *E. coli* DH5α to chloramphenicol resistance. Colonies containing recombinant molecules were blotted and probed with the *cphA* probe. Four positive signals were found after screening of approximately 4,000 transformants, and the recombinant plasmids were designated pUB5826 to pUB5829. On digestion with *EcoRI* and *BamHI*, each recombinant gave an insert of 5.5 kb plus the cloning vector. The restricted recombinants were run on an agarose gel, blotted, and probed with labelled *cphA* to confirm the identities of the inserts. All were positive when probed.

When *E. coli* strains carrying the clones were used to check the MICs of various β-lactams by using standard inocula, they showed no increase in resistance over that of the host, *E. coli* DH5α. However, when a larger inoculum (10⁸ bacteria) was used, the MIC of imipenem increased 8- to 16-fold to a value similar to that of *E. coli*(pAS20R) (13). Cell lysates of *E. coli* (pUB5826 to pUB5829) were analyzed for β-lactamase production, both with and without induction with cefoxitin and imipenem. The β-lactamase activities of all of the cell extracts of strains carrying the *imiS* clones were very similar to the activity displayed by *E. coli*(pAS20R). The *A. veronii* bv. *sobria* metallo-β-lactamase gene was noninducible when expressed in an *E. coli* background.

One clone, pUB5826, was chosen for sequencing. The open reading frame containing *imiS* extends for 762 nucleotides and encodes a preprotein of 254 amino acids (Fig. 1). Upstream of the *imiS* ORF lie the ribosome-binding site, a putative -10 promoter box (TATTTT), and a putative -35 promoter box (TTCACA). However, the spacing between the two components of the promoter is far from ideal. Immediately downstream of the termination codon are inverted repeat sequences (GCTGCCGCGGCGGCAGC) representing a possible terminator for transcription of the *imiS* gene. The *imiS* ORF sequence shows 94% identity to *cphA*. The codon preference of

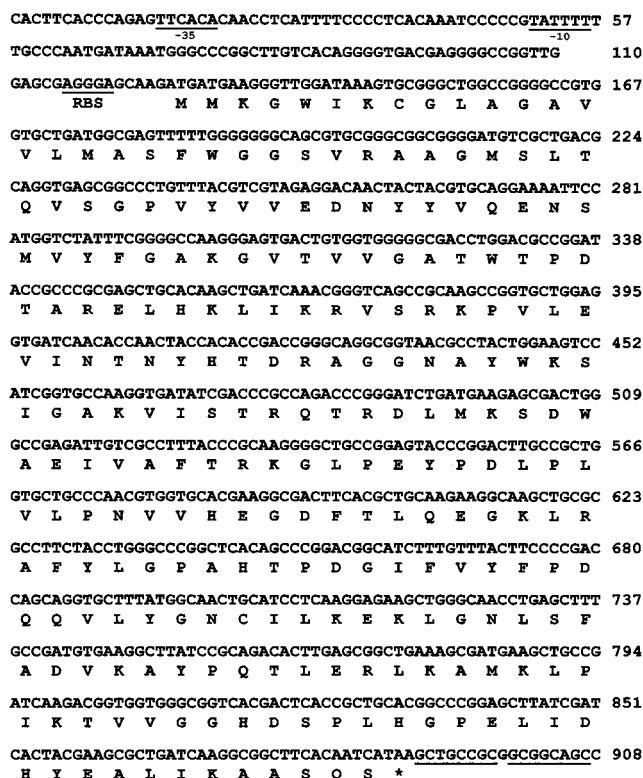


FIG. 1. Nucleotide sequence of the *imiS* ORF and flanking regions. Putative sequences involved in transcription control and the putative ribosome-binding site (RBS) are underlined. The deduced amino acid sequence is also shown.

imiS strongly favors cytidine (C) and guanosine (G) over uridine (U) and adenosine (A) in the third position. Codon preferences were as follows: NNA, 4.3%; NNU, 10.2%; NNC, 31.2%; NNG, 54.3%. These preferences reflect the high G+C content throughout the ORF (62%), similar to the G+C content of other β-lactamase genes analyzed from the same strain of *A. veronii* bv. *sobria* (23). Interestingly, the sequence immediately downstream of *imiS* shares no homology at all with the downstream sequence of *cphA*, including the inverted repeat sequences that may represent a terminator for the transcription of the *imiS* gene.

The results of the tryptic and Glu-C digests were confirmed by Edman sequencing. The complete amino acid sequence of ImiS was derived from a combination of peptide sequence data and peptide molecular mass determination. The molecular mass of the protein determined by liquid chromatography-mass spectrometry of incompletely digested protein was 25,247 Da. This value agrees with the theoretical molecular mass of the protein (25,248 Da). The predicted amino acid sequence shows a perfect match with the protein sequence as determined by Edman sequencing and liquid chromatography-electrospray mass spectrophotometry. The protein sequence confirms the site of the peptide cleavage, between two alanines at positions 27 and 28, and is identical to that for CphA (13).

The predicted pI of the secreted gene product is 8.1, similar to the 8.6 reported for CphA (13) but significantly different from that reported for the AsbM1 enzyme (27). The amino acid sequence of ImiS was compared to those of other group 3 β-lactamases. ImiS showed a very high level of identity to CphA (98%), differing at only seven amino acids (88I, 128E, 138L, 143L, 159Q, 201V, and 225S) (Fig. 2). Given that *cphA*

```

Bce-569H   SQKVEKTVIRNETGTISISQLNKNVWVHTELGSGFNG-EAVPSNGLVL
Bfr-CfiA   -----QKSVKISDDISITQLSDKVITYVSLAEIEGWMVPSNGMIV
Sma-IMP    -----AESLPDLKIEKLDGEGVYVHTSFEEVNGWGVVPKHGLVV
Ahy-CphA   -----AGMSLTQVSGPVYV-----VEDNYVQENSMVY
Asb-ImiS   -----AGMSLTQVSGPVYV-----VEDNYVQENSMVY
Stm-L1     -----VDASWLQPMAPLQIADHTW-----QIGTFDLTALLV
consensus  *   Q   *   V                               V   ***

Bce-569H   NTSKGLVLVDSSWDDKLTKELEIEMVEKKFKRVRTDVI-ITHAHADRI
Bfr-CfiA   INNHAQALLDTPINDAQTEMLVNWVTDLSLHAKVTFPT-PNHWHGDCI
Sma-IMP    LVNAEAYLIDTPTFAKDEKLVTFVFER-GYKIKGSI-SSHFSDST
Ahy-CphA   FGAKGVTVVGATWTPDTARELHKLIKRVSRKPVLEVI-NTNYHTDRA
Asb-ImiS   FGAKGVTVVGATWTPDTARELHKLIKRVSRKPVLEVI-NTNYHTDRA
Stm-L1     QTPDGAVLDDGGMPQMSHLLDNMKARGVTPRDLRLILLSHAHADHA
consensus  **   *   L   *   *   I   *   H   *   D

Bce-569H   GGIKTLKER-GIKAHSTALTAELAKKN-----GYEE
Bfr-CfiA   GGLGYLQKRGVQSYANQMTIDLAKK-----GLPV
Sma-IMP    GGIWLNRSR-SIPTYASELNFELLLKDD-----GKVV
Ahy-CphA   GGNAYWKS I-GAKVVSTRQTRDLMKSDWAEIVAFTEKGLPEYDPLP
Asb-ImiS   GGNAYWKS I-GAKVISTRQTRDLMKSDWAEIVAFTEKGLPEYDPLP
Stm-L1     GPVAELKRRTGAKVAANAESAVALLRGGS D---DLHFGDGTYPYPA
consensus  GG           G           *   L   K

Bce-569H   PLGLDQTVTNLKFNGMKVETFPYFGKGHTEDNIVVWLPQY-----N
Bfr-CfiA   PEHGFTDSLTVSLDGMPLQCYLLGGGHATDNIVVWLPTE-----N
Sma-IMP    ATNSFS-GVNYLVKNKIEVFYPGPGHTPDNVVWLPER-----K
Ahy-CphA   VLPNVVHDGDFTLQEGKVRAFYAGPAHTPDGIFVYFPDQ-----Q
Asb-ImiS   VLPNVVHDEGDEFTEGKLRALFYLGPAHTPDGIFVYFPDQ-----Q
Stm-L1     NADRIVMDEGIVTVGGIVFTAHFMAHGTP-GSTAWTWTDRNGKPVV
consensus  Y   G   *   H   T   D   V   P

Bce-569H   ILVGGCLVKSTSAKDLGNVADAY-VNEWSTSIENVLKRYRNINAVVP
Bfr-CfiA   ILFGGCMKLDNQATSIGNISDAD-VTAWPKTLDKVAKKFPARSARYVVP
Sma-IMP    ILFGGCFIK---PYGLNGLGDAN-IEAWPKSAKLLSKYKAKLVVVP
Ahy-CphA   VLYGNCILKEK----LGNLSFAD-VKAYPQTLERLKAMKLPKTVIG
Asb-ImiS   VLYGNCILKEK----LGNLSFAD-VKAYPQTLERLKAMKLPKTVIG
Stm-L1     IAYADSLAPG-YQLQGNPYPHILEDYRVSFATVRA--LPCDVLIT
consensus  *L   G   C   *K   *GN*   *   *   *   VV

Bce-569H   GH-GEVGD-----KGLLLHTLDLLK
Bfr-CfiA   GH-GDYGG-----TELIEHT-KQIVNQYIES--TSKP
Sma-IMP    SH-SEVGD-----ASLLKLTLEQAVKGLNESKPKSPKPS
Ahy-CphA   GH-DSPLH-----GPELIDHYEALIKAAQS
Asb-ImiS   GH-DSPLH-----GPELIDHYEALIKAAQS
Stm-L1     PHPGASNWDYAGARAGAKALTCKAYADAAEQKFDGQLAKETAGAR
consensus  H           L*

```

FIG. 2. Alignment of ImiS with other class B β -lactamases (9, 10, 13, 20, 21). A consensus was noted when five of the six sequences shared the same amino acid residue. An asterisk denotes conserved residues similar in function. Sequences in bold are those thought to be involved in the binding of one of the Zn(II) ions (3, 4). Bce, *B. cereus*; Bfr, *B. fragilis*; Sma, *S. marcescens*; Ahy, *A. hydrophila*; Asb, *A. veronii* bv. *sobria*; Stm, *S. maltophilia*.

has been shown to hybridize strongly to chromosomal DNAs from several *Aeromonas* spp. that produce metallo- β -lactamase (16), it is likely that the relevant genes in these strains will show high homologies, a conclusion supported by our findings. Interestingly, the N-terminal protein sequence of the metallo- β -lactamase AsbM1 from *A. jandei* AER14M shows only 26% similarity to both ImiS and CphA over the first 27 amino acids (27). If this low level of similarity is maintained throughout the AsbM1 protein, it would indicate a major divergence of the metallo- β -lactamases found in *Aeromonas* spp.

Both *Aeromonas* metalloenzymes CphA and ImiS and a third enzyme from *A. hydrophila*, encoded by *cphA2*, show an Asn-Tyr-His-Thr-Asp sequence at residues 88 to 92, confirming that the *Aeromonas* metallo- β -lactamases possess a significantly different residue, namely, Asn88, in place of a histidine thought to be involved in zinc coordination and the formation of the active site of these enzymes. In contrast to other metallo- β -lactamases, the kinetic profiles of both the *A. hydrophila* CphA and *A. veronii* bv. *sobria* ImiS metallo- β -lactamases demonstrate that while they can readily hydrolyze carbapenems, they have poor activity against most other β -lactams (18, 24). The metallo- β -lactamases of *B. cereus*, *B. fragilis*, and *S. maltophilia* possess the amino acid motif His-X-His-X-Asp close to the start of the proteins (9, 20, 21). This motif, among

other residues, is thought to be responsible for coordinating the two zinc ions found in the active site of the other group 3 enzymes (3, 4). The *Aeromonas* metallo- β -lactamases CphA, CphA2, and ImiS have the related sequence Asn-Tyr-His-Thr-Asp at the equivalent position. The amino acid residues thought to be needed to bind the second zinc ion in the enzymes from *B. cereus* and *B. fragilis*, namely, Asp90, Cys168, and His210 (4), are all conserved in the *Aeromonas* group 3 enzymes. Thus, the possibility arises that CphA, CphA2, and ImiS may complex just a single zinc ion and that this consequently results in the narrow hydrolytic spectra displayed by these enzymes. The structure of ImiS is currently being determined to resolve, among other points, this particular question.

Nucleotide sequence accession number. The nucleotide sequence of *imiS* has been assigned EMBL accession no. Y01415.

This work was funded by the Wellcome Trust (grant 038025/2/93/2/1.5).

REFERENCES

- Bandoh, K., K. Watanabe, Y. Muto, Y. Tanaka, N. Kato, and K. Ueno. 1992. Conjugal transfer of imipenem resistance in *Bacteroides fragilis*. J. Antibiot. 45:542-547.
- Bush, K., G. A. Jacoby, and A. A. Medeiros. 1995. A functional classification scheme for β -lactamases and its correlation with molecular structures. Antimicrob. Agents Chemother. 39:1211-1233.
- Concha, N. O., B. A. Rasmussen, K. Bush, and O. Hertzberg. 1996. Crystal structure of the wide spectrum binuclear zinc β -lactamase from *Bacteroides fragilis*. Structure 4:823-836.
- Crowder, M. W., Z. Wang, S. L. Franklin, E. P. Zovinka, and S. J. Benkovic. 1996. Characterization of the metal-binding sites of the β -lactamase from *Bacteroides fragilis*. Biochemistry 35:12126-12132.
- Felici, A., G. Amicosante, A. Oratore, R. Strom, P. Ledent, B. Joris, L. Fanuel, and J.-M. Frere. 1993. An overview of the kinetic parameters of class B β -lactamases. Biochem. J. 291:151-155.
- Flannery, A. V., R. J. Beynon, and J. S. Bond. 1989. Proteolysis of proteins for sequence analysis and peptide mapping, p. 150. In R. J. Beynon and J. S. Bond (ed.), Proteolytic enzymes—a practical approach. IRL Press, Oxford, England.
- Hanahan, D. 1983. Studies on the transformation of *Escherichia coli* with plasmids. J. Mol. Biol. 45:37-67.
- Hewick, R. M., M. W. Hunkapiller, L. E. Hood, and W. J. Dreyer. 1981. A gas-liquid solid phase peptide sequenator. J. Biol. Chem. 256:7990-7997.
- Hussain, M., A. Carlino, M. J. Madonna, and J. O. Lampen. 1985. Cloning and sequencing of the metallothioprotein β -lactamase II gene of *Bacillus cereus* 569/H in *Escherichia coli*. J. Bacteriol. 164:223-229.
- Ito, H., Y. Arakawa, S. Ohsuka, R. Wacharotayankun, N. Kato, and M. Ohta. 1995. Plasmid-mediated dissemination of the metallo- β -lactamase gene *bla_{IMP}* among clinically isolated strains of *Serratia marcescens*. Antimicrob. Agents Chemother. 39:824-829.
- Maniatis, T., E. F. Fritsch, and J. Sambrook. 1982. Molecular cloning: a laboratory manual. Cold Spring Harbor Laboratory, Cold Spring Harbor, N.Y.
- Martinez, E., B. Bartolome, and F. de la Cruz. 1988. pACYC184-derived cloning vectors containing the multiple cloning site and *lacZ*-alpha reporter gene of pUC8/9 and pUC18/19 plasmids. Gene 68:159-162.
- Massidda, O., G. M. Rossolini, and G. Satta. 1991. The *Aeromonas hydrophila cphA* gene: molecular heterogeneity among class B metallo- β -lactamases. J. Bacteriol. 173:4611-4617.
- Payne, D. J. 1993. Metallo- β -lactamases. J. Med. Microbiol. 39:93-99.
- Rasmussen, B. A., and K. Bush. 1997. Carbapenem-hydrolyzing β -lactamases. Antimicrob. Agents Chemother. 41:223-232.
- Rossolini, G. M., A. Zanchi, A. Chiesurin, G. Amicosante, G. Satta, and P. Guglielmetti. 1995. Distribution of *cphA* or related carbapenemase-encoding genes and production of carbapenemase activity in members of the genus *Aeromonas*. Antimicrob. Agents Chemother. 39:346-349.
- Rossolini, G. M., T. R. Walsh, and G. Amicosante. 1996. The *Aeromonas* metallo- β -lactamases: genetics, enzymology, and contribution to drug resistance. Microb. Drug Resist. 2:245-252.
- Segatore, B., O. Massidda, G. Satta, D. Setacci, and G. Aminocostante. 1993. High specificity of *cphA*-encoded metallo- β -lactamase from *Aeromonas hydrophila* AE036 for carbapenems and its contribution to β -lactam resistance. Antimicrob. Agents Chemother. 37:1324-1328.
- Senda, K., Y. Arakawa, K. Nakashima, H. Ito, S. Ichiyama, K. Shimokata, N. Kato, and M. Ohta. 1996. Multifocal outbreaks of metallo- β -lactamase-producing *Pseudomonas aeruginosa* resistant to broad-spectrum β -lactams, including carbapenems. Antimicrob. Agents Chemother. 40:349-353.

20. **Thompson, J. S., and M. H. Malamy.** 1990. Sequencing the gene for an imipenem-cefoxitin-hydrolyzing enzyme (CfiA) from *Bacteroides fragilis* TAL2480 reveals strong similarity between CfiA and *Bacillus cereus* β -lactamase II. *J. Bacteriol.* **172**:2584–2593.
21. **Walsh, T. R., L. Hall, S. J. Assinder, W. W. Nichols, S. J. Cartwright, A. P. MacGowan, and P. M. Bennett.** 1994. Sequence analysis of the L1 metallo- β -lactamase from *Xanthomonas maltophilia*. *Biochim. Biophys. Acta* **1218**: 199–201.
22. **Walsh, T. R., D. J. Payne, A. P. MacGowan, and P. M. Bennett.** 1995. A clinical isolate of *Aeromonas sobria* with three chromosomal mediated inducible β -lactamases: a cephalosporinase, a penicillinase and a third enzyme, displaying carbapenemase activity. *J. Antimicrob. Chemother.* **35**:271–279.
23. **Walsh, T. R., L. Hall, A. P. MacGowan, and P. M. Bennett.** 1995. Sequence analysis of two chromosomally mediated inducible β -lactamases from a clinical isolate of *Aeromonas sobria*, strain 163a, one a group 2d penicillinase, the other a group 1 AmpC cephalosporinase. *J. Antimicrob. Chemother.* **36**:41–47.
24. **Walsh, T. R., D. C. Emery, S. J. Gamblin, A. P. MacGowan, and P. M. Bennett.** 1996. Enzyme kinetics and biochemical analysis of ImiS, a metallo- β -lactamase from *Aeromonas sobria*. *J. Antimicrob. Chemother.* **37**:423–431.
25. **Watanabe, M., S. Iyobe, M. Inoue, and S. Mitsuhashi.** 1991. Transferable imipenem resistance in *Pseudomonas aeruginosa*. *Antimicrob. Agents Chemother.* **35**:147–151.
26. **Yamaguchi, H., M. Nukaga, and T. Sawai.** 1994. Sequence of the *Klebsiella pneumoniae* RDK4 metallo- β -lactamase. Accession no. D29636. EMBO Database.
27. **Yang, Y., and K. Bush.** 1996. Biochemical characterisation of the carbapenem-hydrolysing β -lactamase AsbM1 from *Aeromonas sobria* AER14M: a member of a novel subgroup of metallo- β -lactamases. *FEMS Microbiol. Lett.* **137**:193–200.